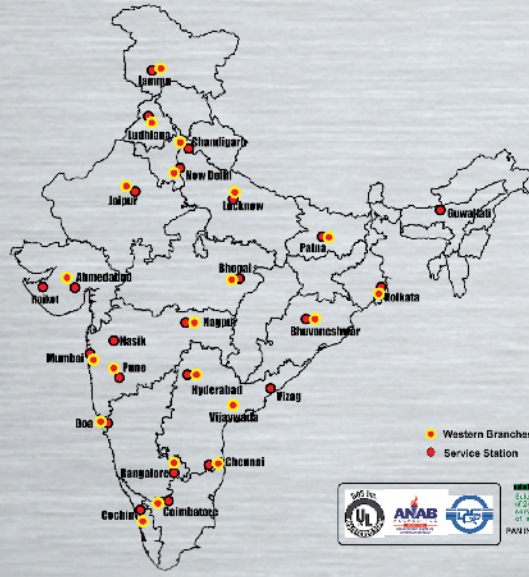


Technical Specifications

Model	Type of Ice	Production Capacity (kgs / day)			Bin Capacity	Machine Dimensions (mm) (W x D x H) Excl. Legs	Shipping Weight (kgs)
		A.T. 10°C W.T. 10°C	A.T. 21°C W.T. 15°C	A.T. 32°C W.T. 21°C			
IM-30CA	CUBE	27	26	22	12	398 x 510 x 695	49
IM-45CA	CUBE	45	44	35	15	660 x 570 x 695	65
IM-45CNE	CUBE	36	32	29	15	633 x 511 x 690	56
IM-65NE LM	CUBE	40	33	25	26	633 x 506 x 860	61
IM-65NE Q	CUBE	26	24	20	17	633 x 506 x 860	66
IM-130NE	CUBE	100	104	88	50	704 x 506 x 1200	85
IM-240NE	CUBE	220	205	160	110	704 x 665 x 1510	128
IM-220AA	CUBE	190	180	160	Various	560 x 639 x 775	76
FM-80KE	FLAKE	85	75	60	26	640 x 600 x 800	75
FM-150KE	FLAKE	150	130	110	26	640 x 600 x 800	82
FM-300AKE	FLAKE	320	260	200	Various	560 x 700 x 780	87
FM-480AKE	FLAKE	500	425	325	Various	560 x 700 x 780	102
FM-600AKE	FLAKE	600	540	445	Various	560 x 700 x 780	114
FM-750AKE	FLAKE	750	650	530	Various	762 x 700 x 780	143
FM-1000AKE	FLAKE	1030	890	740	Various	762 x 700 x 780	156
KM-40B	CRESCENT	43	41	33	16	452 x 617 x 842	50
KM-55B	CRESCENT	53	50	41	23	605 x 617 x 842	58
KM-80B	CRESCENT	79	74	57	40	605 x 719 x 842	64
KM-140B	CRESCENT	138	126	100	55	762 x 712 x 992	92
KMD-201AA	CRESCENT	190	167	135	Various	560 x 625 x 610	73
KMD-270AA	CRESCENT	265	248	221	Various	560 x 625 x 610	73
KM-900MAH E	CRESCENT	380	365	344	Various	762 x 695 x 950	128
KM-1301SAH E	CRESCENT	505	471	455	Various	1219 x 695 x 695	143
DCM-60 KE	CUBELET	110 cups/hour	99 cups/hour	87 cups/hour	1.9	350 x 585 x 695	56
DCM-120KE	CUBELET	230 cups/hour	209 cups/hour	188 cups/hour	4	350 x 585 x 815	66

For Detailed Specifications Please Contact Us. *Each Cup = 40g *Operating Conditions: A=40 Deg C; W=35 Deg C
 Due to continuous product improvement technical specifications are subject to change
 **Under simulated R&D ambient test conditions



WEST ZONE:
 Mumbai:- Western Refrigeration Pvt. Ltd. 608, 6th Floor Awer Galaxy, Opp Johnson & Johnson, LBS Marg, Mulund (West), Phone: 022-67696181.
 Pune:- Western Refrigeration Pvt. Ltd. 21/63/26, Meera Building 1 Near Nilayam Theatre / Sadashiv Peth / Pune - 411030. Phone: 9880073030.
 Nashik:- Western Refrigeration Pvt. Ltd. Shivdell bungalow, Gellwad Mota, Near Jain Bhawan, Nasik Road, Pin code 422101. Phone: 9785559949.
 Nagpur:- Western Refrigeration Pvt. Ltd. Plot No. 53, Veer Govarkar Nagar, Wardha Road, Nagpur - 440015. Phone: 9890007149.
 Ahmedabad:- Western Refrigeration Pvt. Ltd. 10, Achleshwar Society, Opposite Siddhivinayak Hospital, Near Kankaria Bai Vastika, Maninagar, Ahmedabad, Gujarat 380008. Phone: 9009900307.
 Rajkot:- Western Refrigeration Pvt. Ltd. Phone: 9925767474.
 Indore:- Western Refrigeration Pvt. Ltd. Plot No. 163 P.U. 4 Scheme No. 54, A.B. Road, Indore having a Second Floor - 452001. Phone: 9039000303.
 Goa:- Western Refrigeration Pvt. Ltd. Shop No. 1 & 2, Ground Floor, Bearing S.V.No.824, Mercutim, Agassaim - 403204, Goa. Phone: 7600020032.

EAST ZONE:
 Kolkata:- Western Refrigeration Pvt. Ltd. 69A Karaya Road, Belly House Suite No - 3A, 3rd Floor, Kolkata - 700 019. Phone: 7603041200 / 7797335678.
 Bhubaneswar:- Western Refrigeration Pvt. Ltd. D/O-Mamta Agro Foods Plot No-A-57, Sector-A, Mancheswar Industrial Estate, Bhubaneswar-751010. Phone: 9771452203.
 Patna:- Western Refrigeration Pvt. Ltd. S.V.No. 4th Floor, Flat no. 07, Station Road, Karbigahya, Beside Bhagwati Complex and Ram Dulari Hotel, Patna-800 001. Phone: 9830403129.
 Guwahati:- Western Refrigeration Pvt. Ltd. Phone: 9838985540.
 Ranchi:- Western Refrigeration Pvt. Ltd. Or No - C-16, Harmu Housing Colony, Post Office - Doranda, Ground Floor, Ranchi - 834 002. Phone: 9431107326.

NORTH ZONE:
 Delhi:- Western Refrigeration Pvt. Ltd. Unit no. Unit no. SH-1, Ground Floor, Vardhaman Grand Plaza, Manglam Place, Sector - 3, Rehli, Delhi-110085. Phone: 9953006474.
 Jaipur:- Western Refrigeration Pvt. Ltd. Heli Mark, Special (F) Road No-1, Industrial Estate 22 Sodan, Jaipur, Rajasthan - 302006. Phone: 9828922244.
 Lucknow:- Western Refrigeration Pvt. Ltd. B1/34, Sector-L, Near P.N.B. Mama Chauraha Branch, Aliganj Lucknow (U.P) - 226020. Phone: 9919466664.
 Ludhiana:- Western Refrigeration Pvt. Ltd. 42221, Bari Pura, Chandigarh Road, Behind Sicech Computer Ludhiana - 141010. Phone: 9988802850.
 Chandigarh:- Western Refrigeration Pvt. Ltd. Near Hotel KK Residency Shop No-1, House No-213, Sector 52, Village - Kajhari Chandigarh (U.T) Pin No 160047. Phone: 9779044557.
 Jammu:- Western Refrigeration Pvt. Ltd. Sidco Chowk, Near Axis Bank, Bari Brahmana, Samba, Jammu - 181133 (India). Phone: 9419228046.
 Agra:- Western Refrigeration Pvt. Ltd. 1238, Pivash Nagar, Mathura Road, Balpur, Agra - 282007. Phone: 9828656503.

SOUTH ZONE:
 Chennai:- Western Refrigeration Pvt. Ltd. Old No.14, new No.47, 12th Avenue, Ashok Nagar, Chennai 600083. Phone: 9960222999.
 Coimbatore:- Western Refrigeration Pvt. Ltd. No.102 - A, Meenachi Mahal, Deivanayaki Nagar, Sanganoor Road, Ganapathy, Coimbatore - 641006. Phone: 9962541772.
 Kachin:- Western Refrigeration Pvt. Ltd. B.No. 2/378A, Methanam Road, Floor North, Udyogamandal P.O. Kachi - 685001. Phone: 9745633376.
 Hyderabad:- Western Refrigeration Pvt. Ltd. D.No. 2-98, K.S. Towers, Venkateswara Colony, Near Sushira Centre, Jeevanpeta (H), Hyderabad - 55. Phone: 9885728001.
 Bangalore:- Western Refrigeration Pvt. Ltd. No. Sunjay 42/1, Katha No. 191/142/1, Hiranukute Village, Begur Hobli, Trip Apparell Compound, Hosapalya, Muneshwar Nagar, Kudlu Main Road, Bangalore 560068. Phone: 9536118184.
 Vijayawada:- Western Refrigeration Pvt. Ltd. Door No 2-105/2, Kamalahi Godown, Mallaganja Centre, Golapudi, Vijayawada Rural, Krishna Dist. AP 521225. Phone: 9052220074.
 Vizag:- Western Refrigeration Pvt. Ltd. Phone: 9951052786.



HOSHIZAKI ICE MACHINES

The Perfect Ice!



WESTERN REFRIGERATION PVT. LTD.
 Head Office: 7/B Pannalal Silk Mills Compound,
 78 L.B.S. Marg, Bhandup (W), Mumbai: 400 078.
 Tel: 022-67161200/ 201
 Email: kesales@westernequipments.com
 Website: www.westernequipments.com

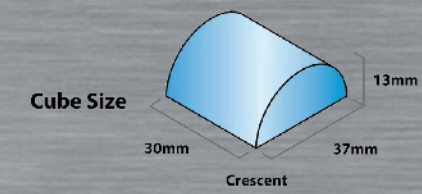
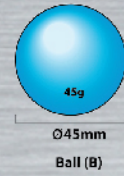
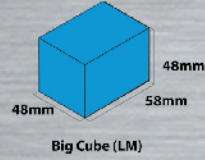
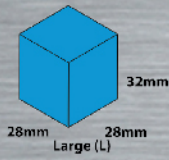


SINCE 1972

IM

N Series

Cube Size



KM

Crescent Ice



IM 30CA
Capacity: 27kgs/day
Cube size: L



IM 45CA
Capacity: 45kgs/day
Cube size: L



IM 45 CNE
Capacity: 36kgs/day
Cube size: L



IM 65 NE LM
Capacity: 40kgs/day
Cube size: LM



IM 65 NE Q
Capacity: 26kgs/day
Cube size: B



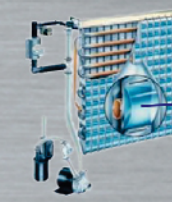
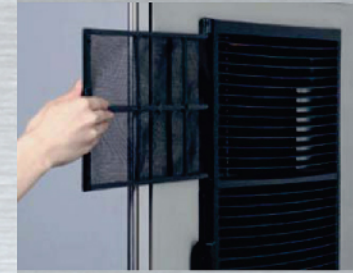
IM 130 NE
Capacity: 100kgs/day
Cube size: L



IM 240 NE
Capacity: 220kgs/day
Cube size: L



IM 220AA
Capacity: 190kgs/day
Cube size: L



Dual Stainless Steel Evaporator.
Individual Hard Clear Crescent Cubes.



KM 40B
Capacity: 43kgs/day



KM 55B
Capacity: 53kgs/day



KM 80B
Capacity: 79kgs/day



KM 140B
Capacity: 138kgs/day



KMD 201 AA
Capacity: 190kgs/day



KMD 270 AA
Capacity: 265kgs/day



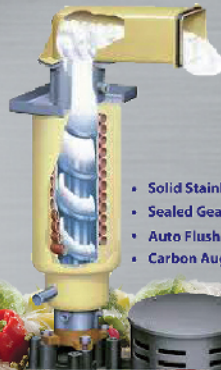
KM 900 MAH-E
Capacity: 380kgs/day



KM 1301 SAH-E
Capacity: 505kgs/day

FM

**Flake/
Nugget Ice**



- Solid Stainless Steel Auger
- Sealed Gear Housing
- Auto Flush Function
- Carbon Auger Bearings



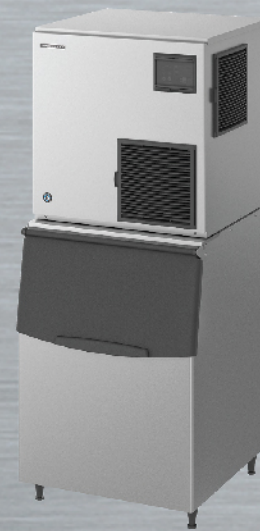
FM 80 / 150 KE
Capacity: 85/150kgs/day



FM 300 / 480 AKE
Capacity: 320/500kgs/day



FM 600 AKE
Capacity: 600kgs/day



FM 750 / 1000 AKE
Capacity: 750/1030kgs/day

Ice Dispenser



DCM 60 / 120KE
Capacity: 110/230 cups/hour

Capacities indicated are at 10 Deg C water & 10 Deg C Ambient Temp

Optional Bins

Model	B-300 (144kgs)	B-500 (217kgs)	B-800 (348kgs)
	DIMENSIONS OF B SERIES (D:820, H 1106(mm))		
	W:560mm	W:760mm	W:1220mm
KMD 201AA	○	○	○
KMD 270AA	○	○	○
KM 900MAHE	○	○	○
KM 1301SAHE	○	○	○
FM 300AKE	○	○	○
FM 480AKE	○	○	○
FM 600AKE	○	○	○
FM 750AKE	○	○	○
FM 1000AKE	○	○	○